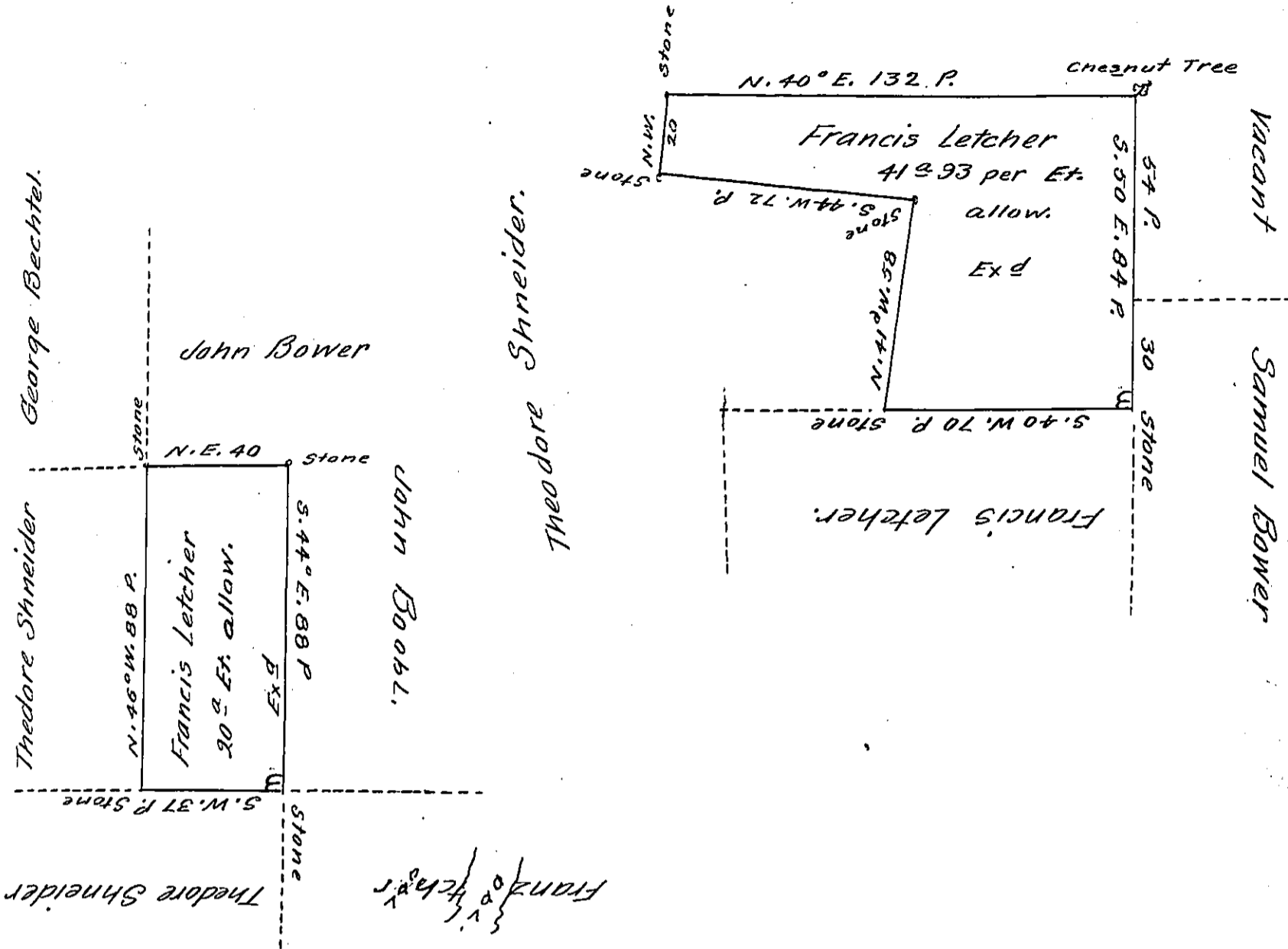


Casper Leidcker



A Draught of Two Tracts of Land situate in Hereford Township in the County of Berks, formerly in the County of Philadelphia and Province of Pennsylvania, The one Containing forty one acres and 23 perches of Land with the usual allowance, and the other Containing Twenty acres of Land with the usual allowance of Six per Cent for Roads - That were surveyed unto Francis Letcher & al. Latscher: In Pursuance of Two Warrants from the Hon^{ble} The Proprietaries Dated the 26th Day of May Anno-1750.

Form^{ly} surveyed by Edward S^r III Surveyor and Resurveyed on the 5th - april Anno-1762.

P David Schultze -

IN TESTIMONY that the above is a copy of the original remaining on file in the Department of Internal Affairs of Pennsylvania, made conformably to an Act of Assembly approved the 16th day of February, 1833, - I have hereunto set my Hand and caused the Seal of said Department to be affixed at Harrisburg, this fourteenth day of August 1905

David P. Schultze
 Secretary of Internal Affairs.